

For more information, visit

[www.cynosure.com/sculpsure](http://www.cynosure.com/sculpsure)



\*Optimal results are generally achieved through a series of treatments.

\*\*When using the petite mask for non-invasive lipolysis of the submental area.

The SculpSure® device is a non-invasive laser body contouring system intended to permanently eliminate fat cells through non-invasive lipolysis of the chin (submental) area, abdomen, love handles (flanks), back, inner thighs and outer thighs. Individual results may vary and are not guaranteed. SculpSure® treatments are not intended for weight loss results or for people who are obese. Mild side effects may occur including temporary tenderness, swelling or tissue firmness in the treatment area. Please consult with your physician to see if SculpSure® treatments are right for you. <sup>1</sup>Medical Insight, Inc. "Energy-based body shaping" July 2017, <sup>1</sup>American Society for Aesthetic Plastic Surgery, 2015 and 2016 Cosmetic Surgery National Data Bank Statistics. <sup>2</sup>American Society for Dermatologic Surgery (ASDS) 2018 Consumer Survey on Cosmetic Dermatologic Procedures. <sup>3</sup>Data on File, Cynosure, 2017. <sup>4</sup>Overweight & Obesity Statistics, National Institute of Diabetes and Digestive and Kidney Diseases, 2010. <https://www.niddk.nih.gov/health-information/healthstatistics/overweight-obesity>

©2021 Cynosure, LLC. All rights reserved. Cynosure, SculpSure and A Smarter Way to Sculpt are registered trademarks of Cynosure, LLC. Contact Cooling is a trademark of Cynosure, LLC. Use of photography without written permission of Cynosure is prohibited. PRD\_4873

921-7026-072\_04

## Specs & Accessories

Wavelength	1060 nm
Pulse Width	CW
Power Output	40W max per diode (160W total)
Aiming Beam	None*
Electrical Requirement	230 VAC (20 amp circuit required)
Size (H x W x D)	57" x 24" x 36" with arm, no umbilical loop 68" x 24" x 36" with arm and umbilical loop 8.0 mm, 10.0 mm
Weight	310 lbs with applicators 298 lbs without applicators

# Permanent Fat Reduction/

Non-invasive laser lipolysis

**SCULPSURE®**  
by CYNOSURE®



# Heat treat your patient's stubborn body fat ✓

SculpSure body contouring is a breakthrough non-invasive hyperthermic laser technology, designed to safely and effectively eliminate unwanted fat cells.

86%

People bothered by excess weight on any part of their body.<sup>2</sup>

OVER  
\$4.3B

Revenue from body contouring treatments.<sup>1</sup>

24.7%

Year over year increase in non-surgical fat reduction procedures.<sup>2</sup>

—  
NO SURGERY

—  
NO DOWNTIME

—  
NATURAL LOOKING RESULTS



## Treatment Areas/

—  
Submental

—  
Back

—  
Flanks

—  
Abdomen

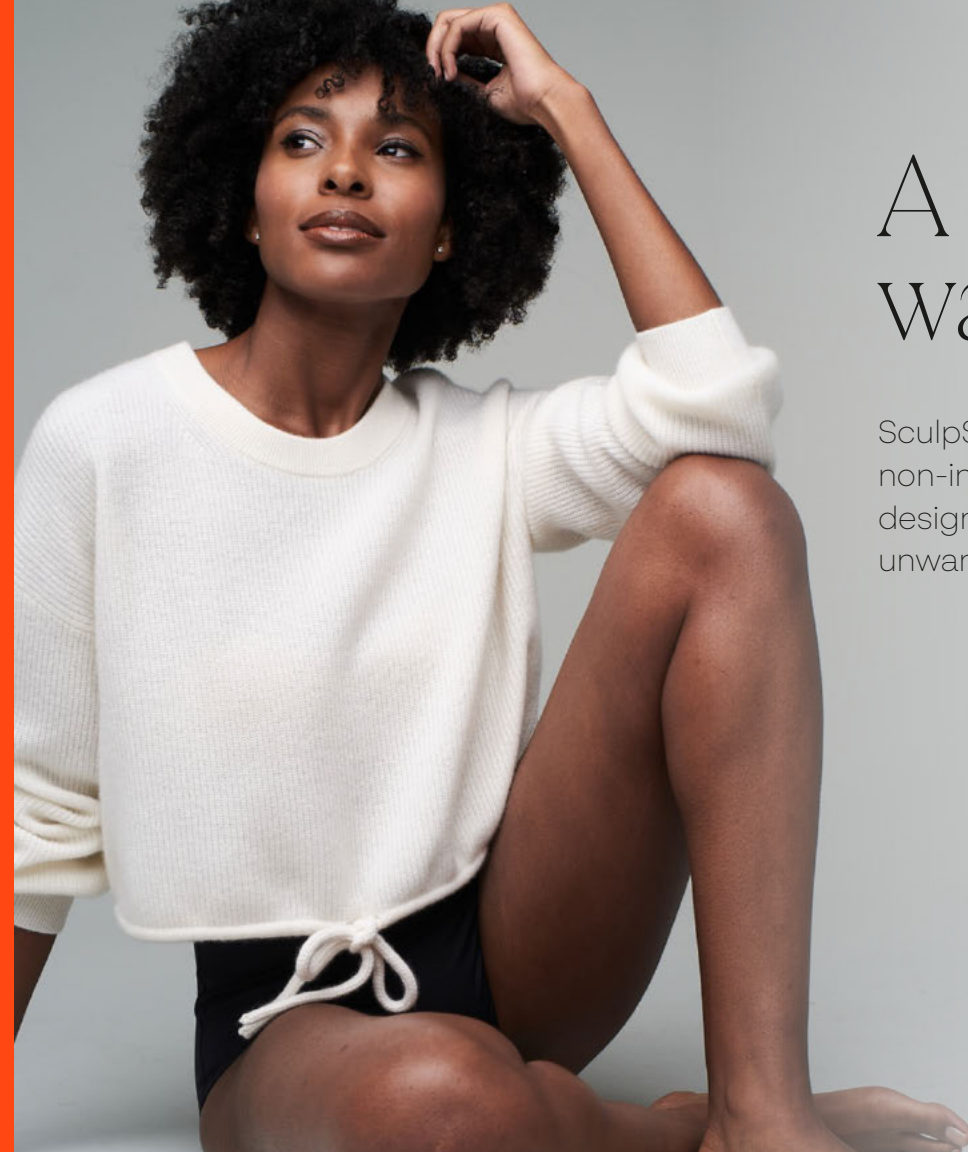
—  
Outer thigh

—  
Inner thigh



*“Our patients have been extremely pleased with SculpSure’s revolutionary approach to non-invasive reduction of submental fat. Treatments are comfortable, without downtime and with excellent results.”*

**-Bruce Katz, MD**



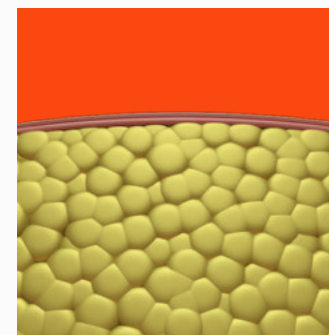
# *A smarter way to sculpt*

SculpSure body contouring is a breakthrough non-invasive hyperthermic laser technology, designed to safely and effectively eliminate unwanted fat cells.

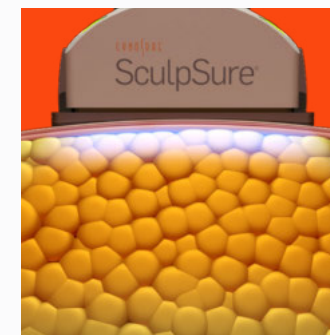
**25**  
minutes per area\*

## *Proven fat reduction without surgery or downtime*

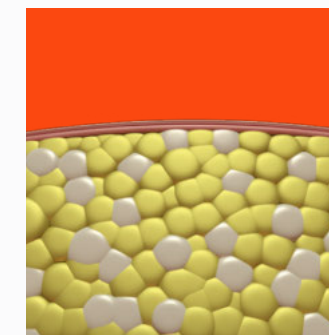
Using controlled energy modulation, SculpSure body contouring safely targets adipose tissue with minimal absorption in the dermis, leaving the skin's surface unharmed. Throughout the treatment, Contact Cooling™ is used to help provide the ideal depth of penetration for adipose tissue and cool the skin's surface for added safety and patient comfort.



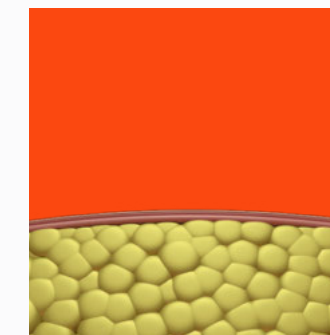
SculpSure system's 1060nm wavelength technology has a high affinity for subcutaneous adipose tissue.



The laser raises the temperature of adipose cells between 42° and 47°C, damaging their structural integrity.



Over the next three months, the body naturally eliminates the disrupted fat cells.



Disrupted fat cells are permanently eliminated from the body and will not regenerate.

# Sculpting your patient's *ideal body*✓

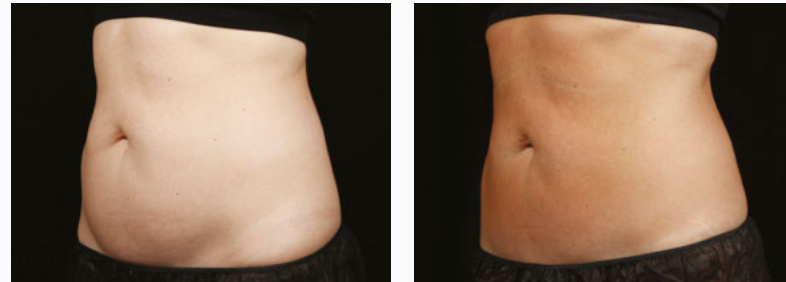
Guided Mode Technology for body treatments provides a preset algorithm for energy titration resulting in a controlled increase in temperature to achieve lipolysis of the fat cells.

The software provides an assisted treatment with measured and consistent power changes resulting in a more comfortable treatment session with no compromise to efficacy.



**Before & after 2 treatments**

*Courtesy of D. Marciano, MD*



**Before & after 2 treatments**

*Courtesy of S. Doherty, MD*

# Smarter technology for treating *submental fat*✓

## **PETITE & STANDARD MASK**

SculpSure treatments are FDA cleared for non-invasive lipolysis of submental fat including individuals with a BMI up to 49. The device can also affect the appearance of lax tissue in the submental area\*\*.

**100%**  
Patient Satisfaction<sup>3</sup>



**Before & after 2 treatments**

*Courtesy of B. Katz, MD*



**Before & after 2 treatments**

*Courtesy of B. Katz, MD*